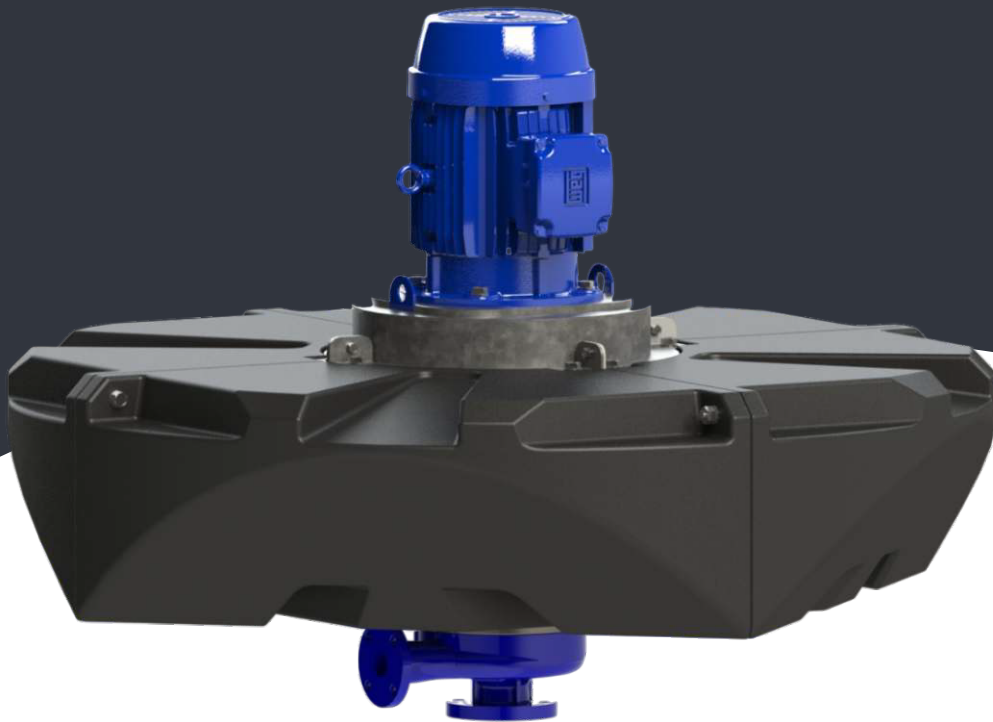




# DAQUA DF

 **DAQUA**  
Mine Dewatering System



[www.daqua.blue](http://www.daqua.blue)

# Daqua DF

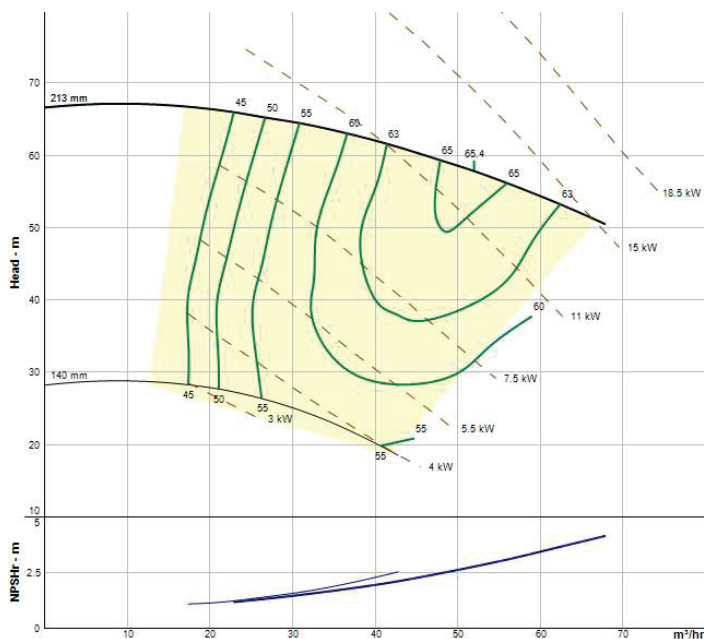
## About Daqua DF

The Daqua DF is a floating vertical centrifugal pump designed with the motor located outside the fluid. Its construction in metallic materials results in high resistance to challenging fluids.

Simultaneously, the absence of a mechanical seal ensures proper operation in abrasive applications or those involving suspended solids, eliminating the need of frequent repairs. The floating Daqua pump provides an optimal operational position, preventing the suction of bottom sludge and surface solids. Its portable design enables easy handling within the sump, as well as quick and simple relocation to other plant areas.

## Performance Curves

### • Daqua DF238



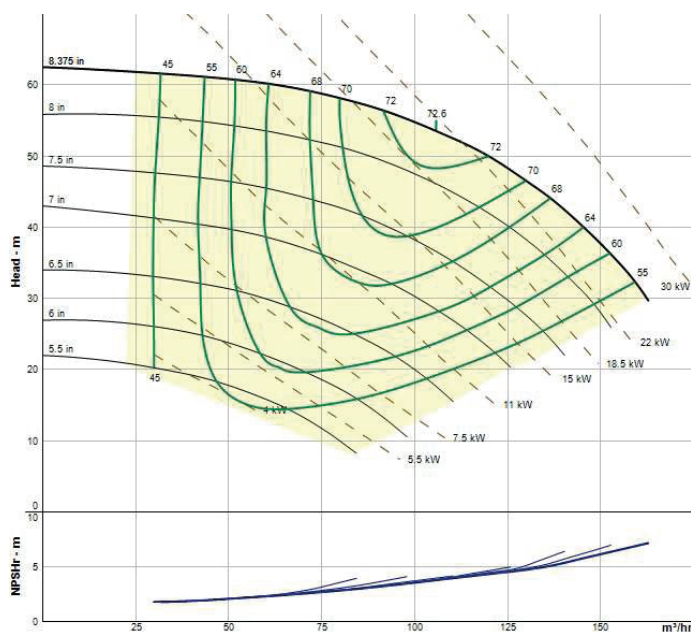
### Daqua DF238

The floating Daqua can be constructed in stainless steel (CF8M), duplex (CD4MCU), or cast steel. Sealing system with expeller. Available motor options include 11 kW, 15 kW, and 18.5 kW.

### Specification

Max Capacity	68 m³/hr	
Max Head	67 mts.	
Max Motor Speed	2900 RPM	
Suction Size	3"	
Discharge Size	2"	
Max solids size	5 mm	
Weight	with floating	250 kg.
	without floating	210 kg.
Minimum fluid depth	with floating	500mm.
	without floating	300 mm.

### • Daqua DF348G



### Daqua DF348G

The floating Daqua can be constructed in stainless steel (CF8M), duplex (CD4MCU), or cast steel. Sealing system with expeller. Available motor options include 30 kW and 37 kW.

### Specification

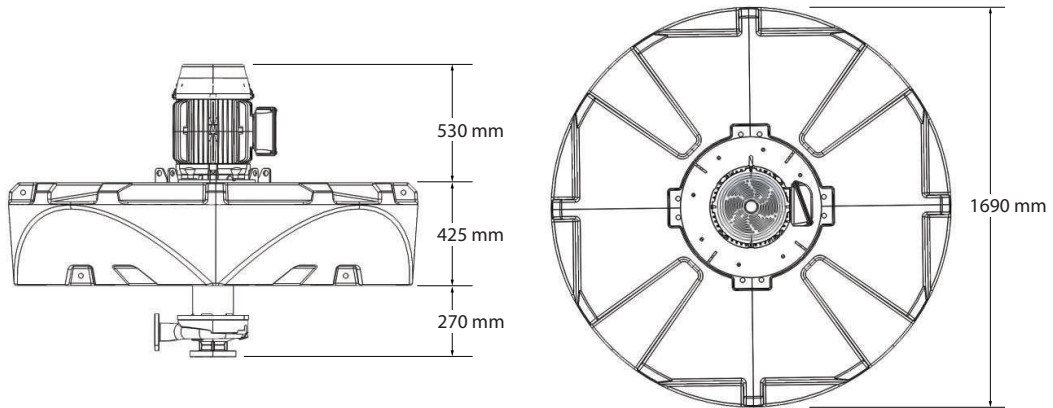
Max Capacity	159 m³/hr	
Max Head	62 mts.	
Max Motor Speed	2900 RPM	
Suction Size	4"	
Discharge Size	3"	
Max solids size	5 mm	
Weight	with floating	510 kg.
	without floating	400 kg.
Minimum fluid depth	with floating	500mm.
	without floating	300 mm.

# DF Series

## Dimensions

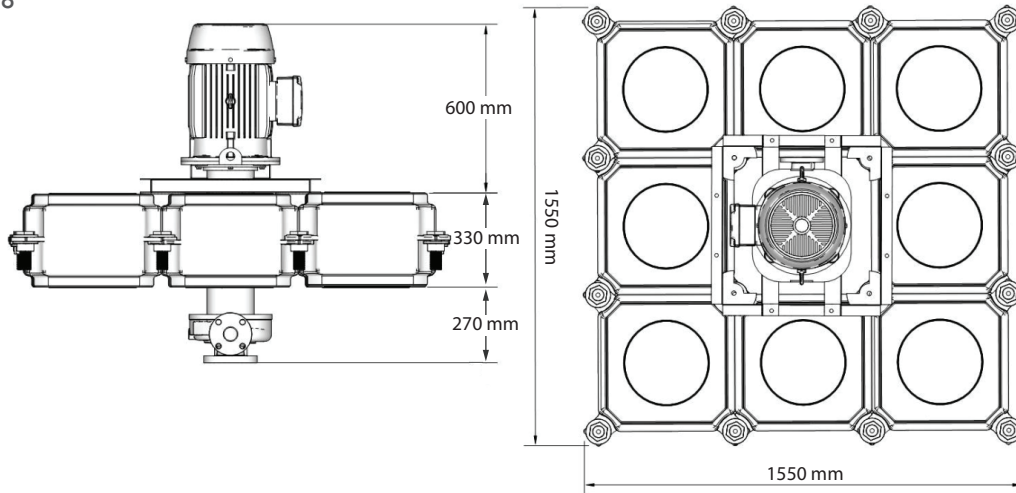
### CIRCULAR FLOATING

- DF238



### CUBE FLOATING

- DF238



- DF348G

